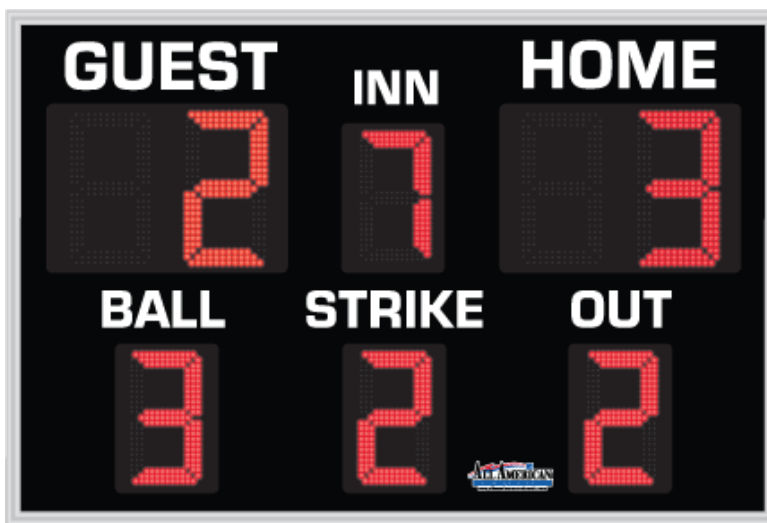


OUTDOOR SCOREBOARD
8340

Baseball



OVERALL DIMENSION

4' high x 6' wide x 5.0" deep. Unistrut mounting (standard) adds an additional 1.625" Depth.

INFORMATION DISPLAYED

Home and Guest Scores, Inning, Ball, Strike, Out.

DIGITS

14", 12" Bright Red, 7-Segment LEDs.

INDICATORS

None.

CAPTIONS

White vinyl letters.

HORN

Horn not included. External 100 dB Vibrating Horn or 120dB Trumpet Horn are available.

CONSTRUCTION

5" extruded aluminum frame, .093" thick, mill finish. Faces made from shatter proof polycarbonate.

STANDARD COLORS
(Custom Colors Available)



ELECTRONICS

100% solid state, microprocessor controlled system.

SERVICING

Front access for ease of servicing. Plug in modules for ease of replacement.

MICROPROCESSOR CONTROL CONSOLE



Sold separately. Extruded Aluminum, high impact low profile microprocessor control console, latest state of the art, user friendly. Size: 13.25" wide x 5" high x 9" deep. Weight: 6 lbs. Microprocessor to be supplied with 25 feet of cable (hardwire). Microprocessor control console with membrane keyboard provides for direct entry of all information. Radio Control is available.

JUNCTION BOX

One outdoor rated junction box, 5" x 3" with cover and ethernet cable. (Hardwire)

DATA CABLE

Twisted pair, direct burial, RJ45 Connectors (Hardwire).

POWER REQUIREMENTS

115/230 VAC. 50/60 Hz. Minimum one 20A circuit is recommended.

INSTALLATION

Typically installed on two posts. Mounting kits are supplied with scoreboard.
NOTE: Number of posts must be determined locally by licenced engineer.

WEIGHT

Net 126 lbs / Shipping 212 lbs.

WARRANTY

Five year guarantee against defects in materials and workmanship. Factory repair service for parts in warranty. Union label. UL Certified.

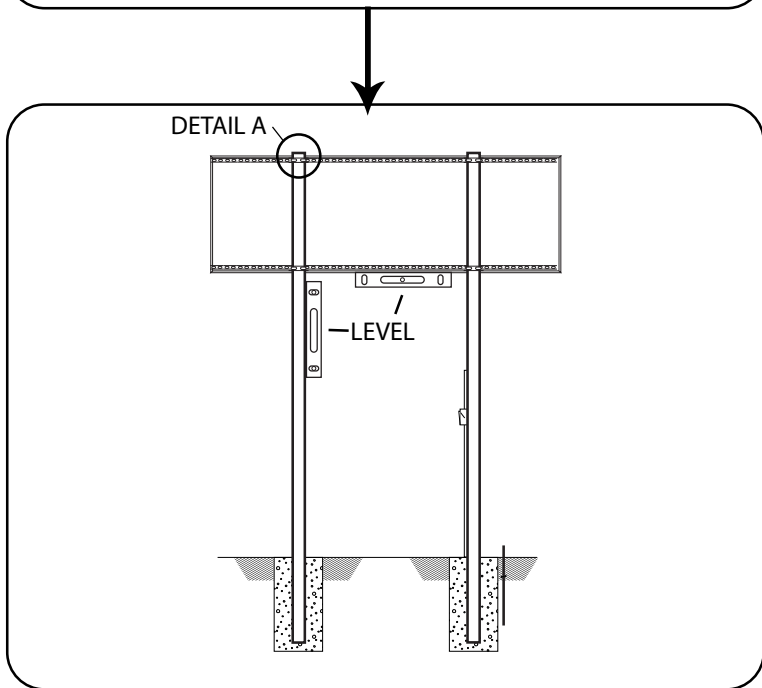
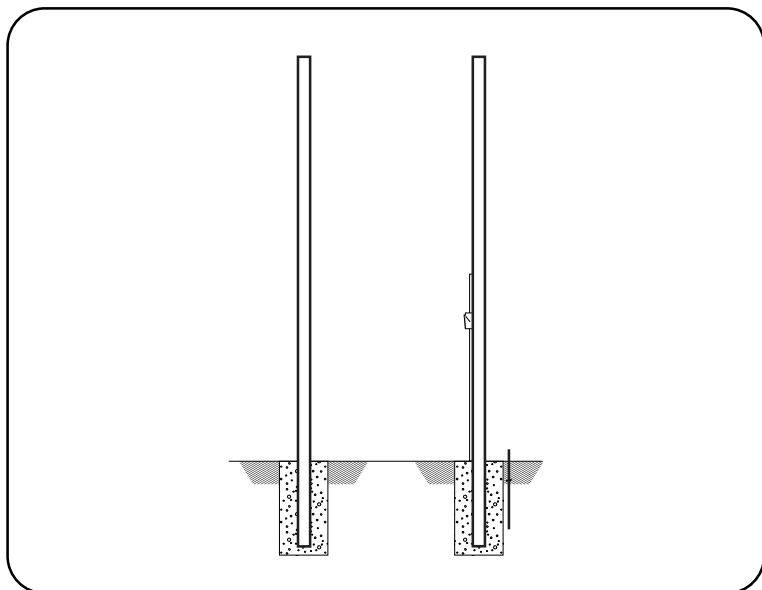
STANDARD VARIATIONS - Add suffix to model number in order that they appear below (see examples on next page)

Model + RV2

Radio upgrade. 2.4 GHz spread spectrum, 1500' expected range.

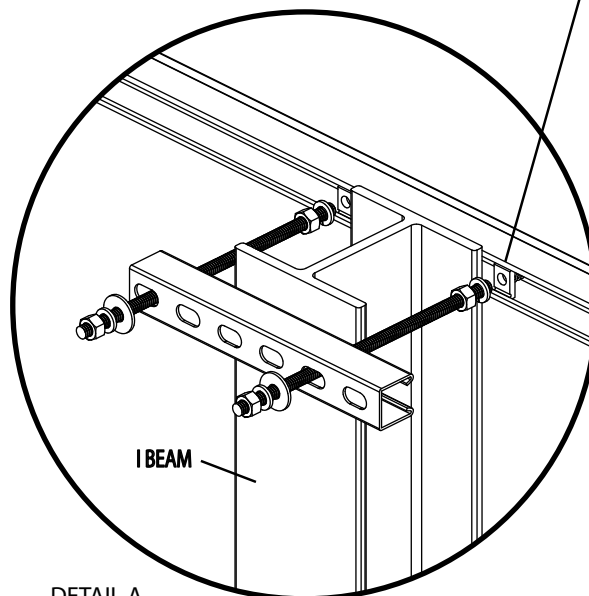
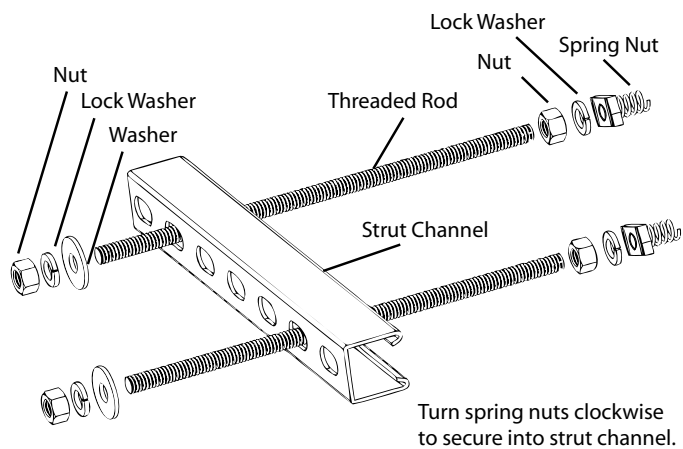
Typical Single-Cabinet Scoreboard Installation Illustration

NUMBER OF POLES SHOWN ONLY FOR REFERENCE. MUST BE DETERMINED LOCALLY BY LICENCED ENGINEER.

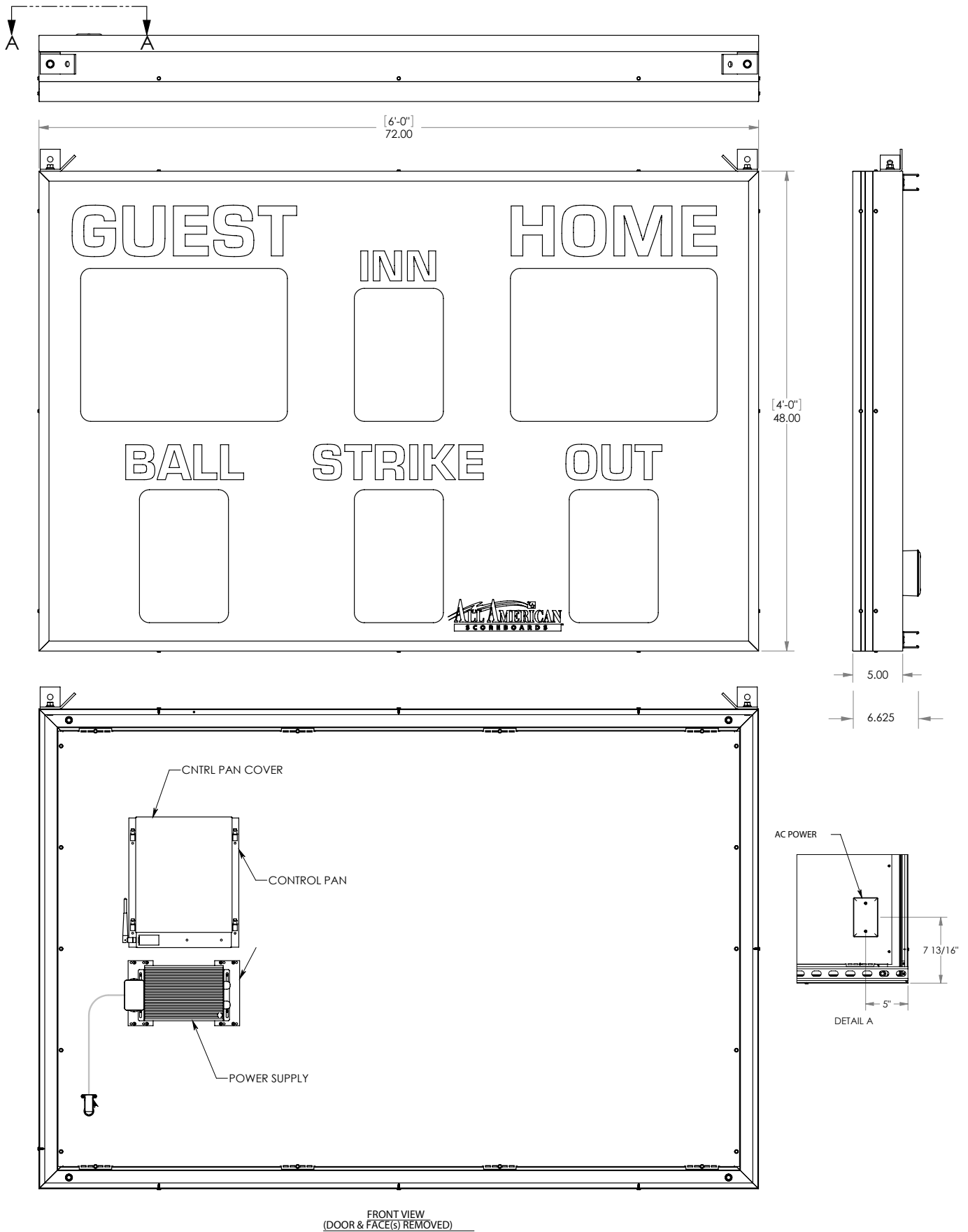


Mounting Kit

Quantity of kits depends on board and number of poles required. Installed at every point where a pole and a strut channel intersect. Local ordinances, soil conditions and wind load requirements may require additional structure.

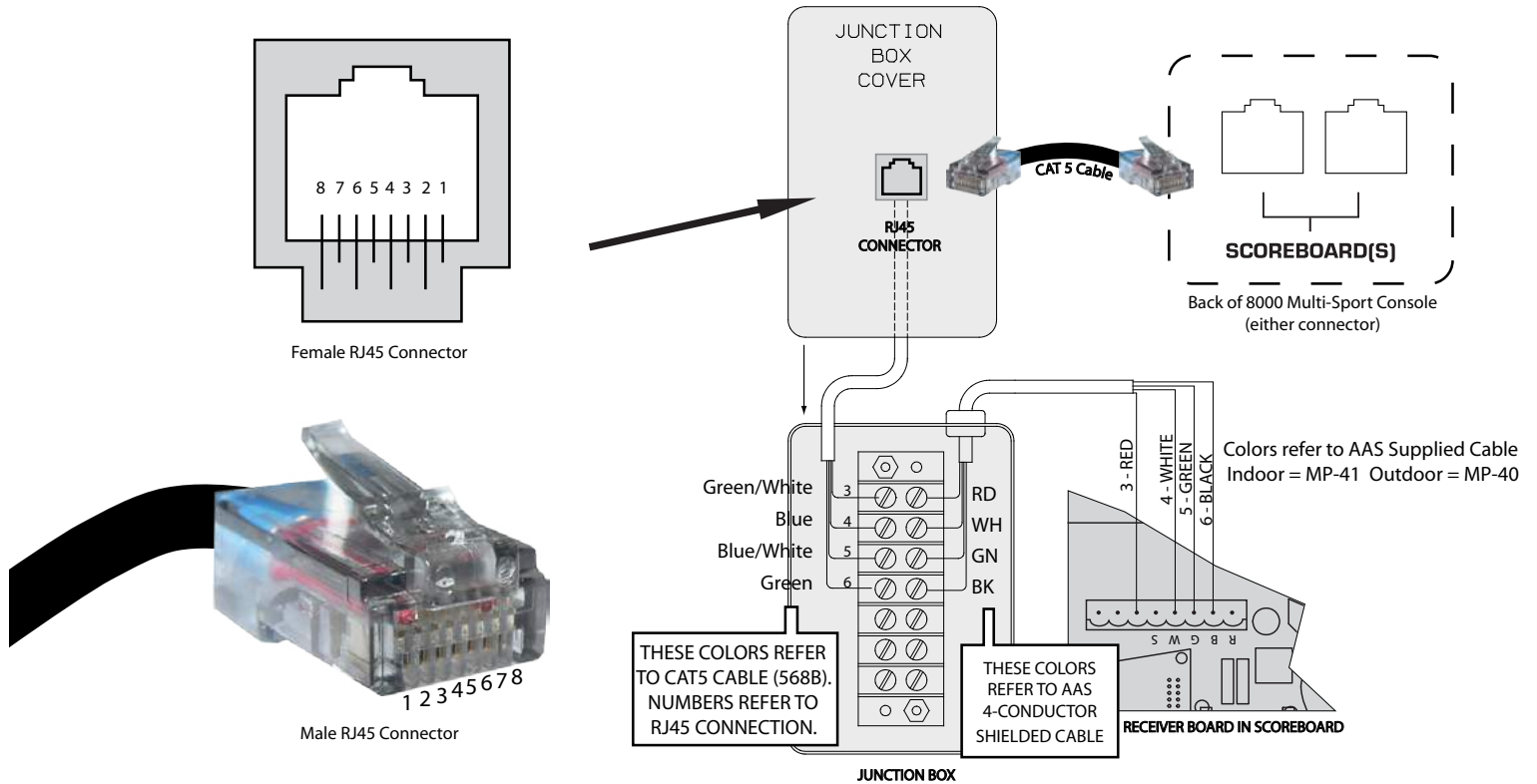


DETAIL A.
Pressure hold scoreboard cabinets to poles.
Secure with weld.



Hardwire Scoreboard Wiring

With a Standard Junction Box



Wiring a Supplemental Display

With a Single Junction Box

